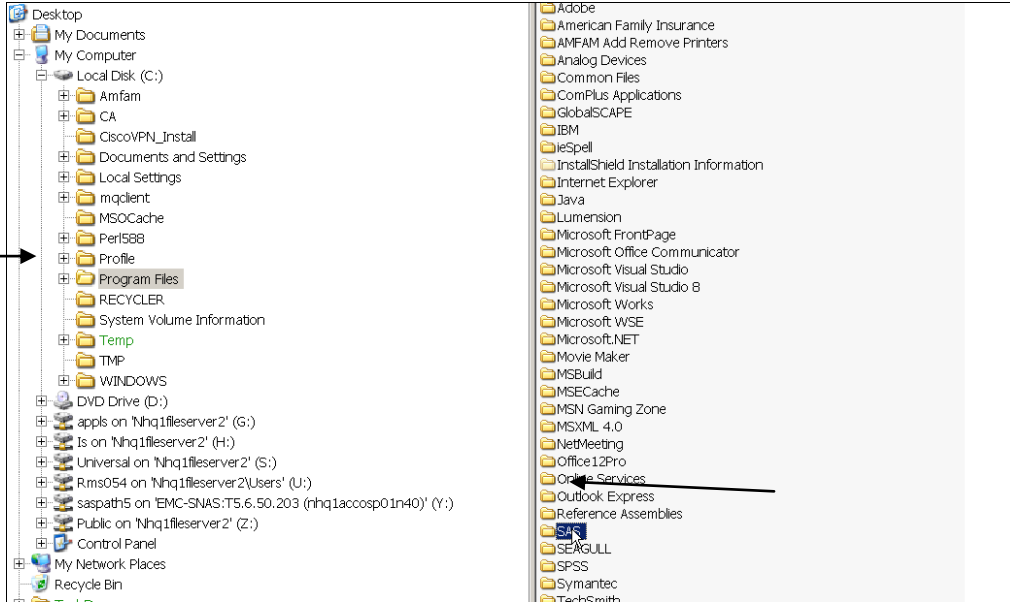


CREATE SEPARATE SHORTCUTS TO DIFFERENT PROFILES

Your EG install may have more than one profiles for connection and it is possible to create several shortcuts reflecting each individual profile.

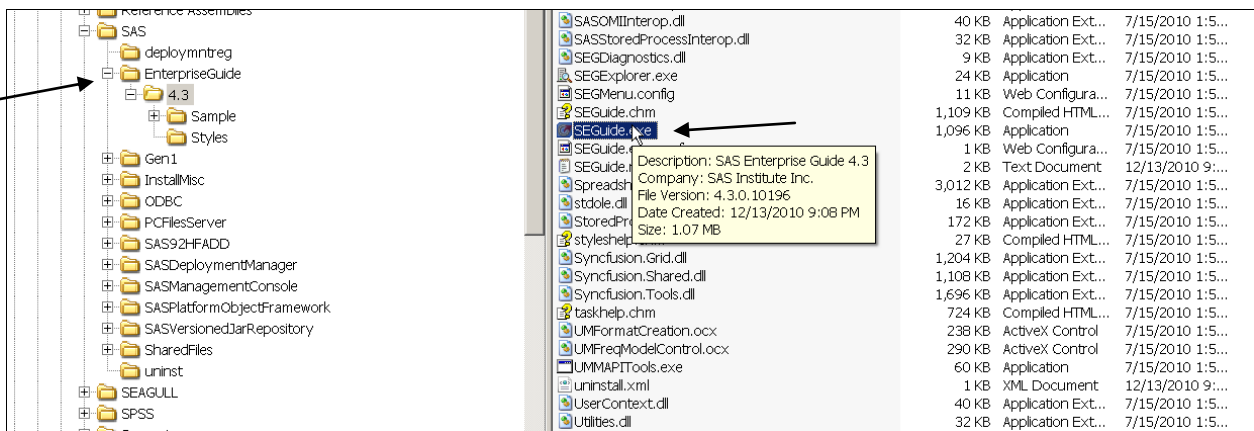
The steps to create customized shortcuts are:

In windows explorer go to Program Files > SAS

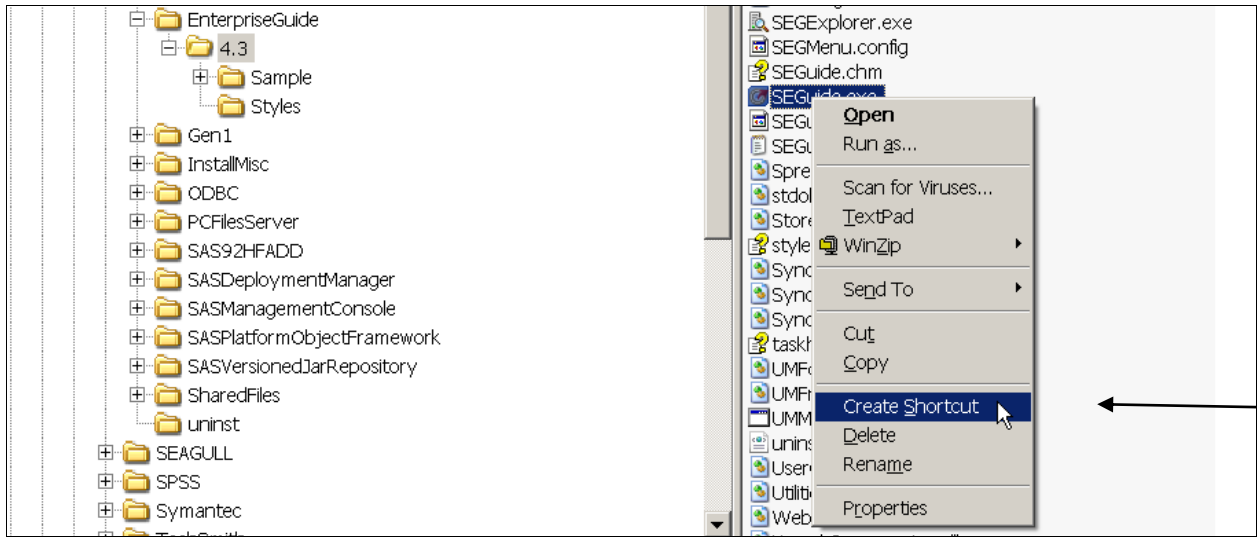


Unleash performance

Within SAS expand Enterprise Guide > 4.3 > SEGuide.exe

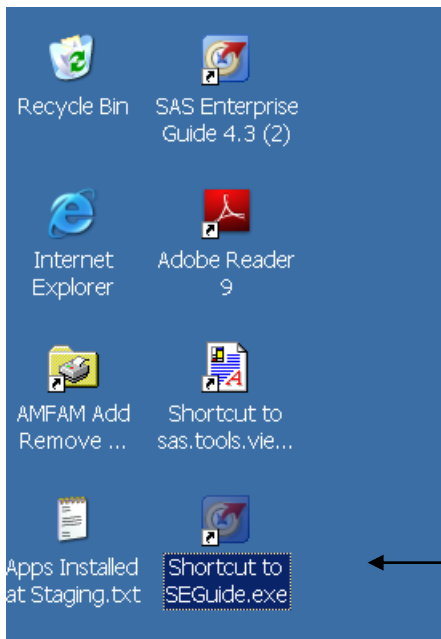


Right Click SEGUIDE.exe and select Create Shortcut

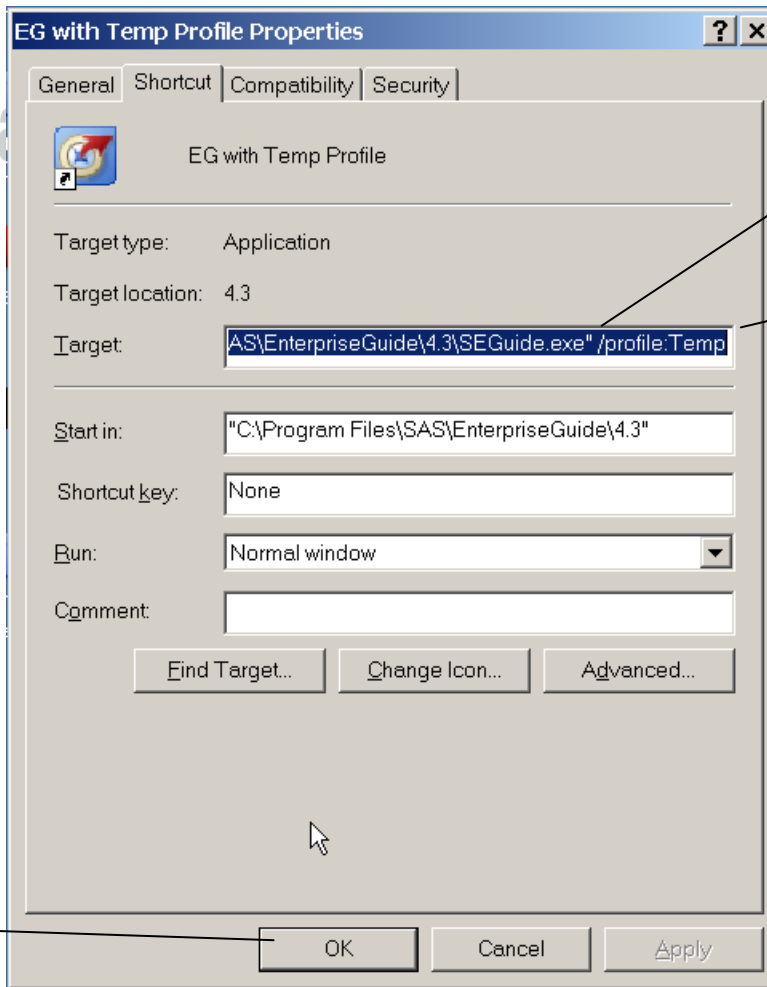
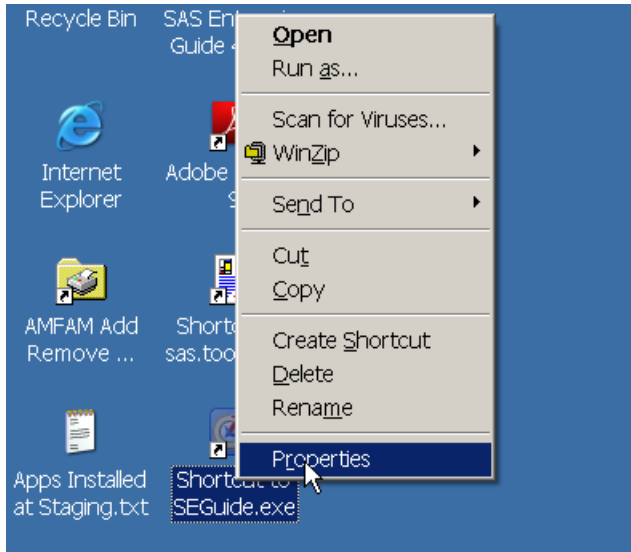


A shortcut will be created, move the just created shortcut to Desktop (no screen shot shown)

Go to the desktop



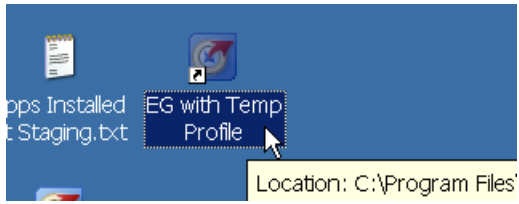
Right click on the shortcut, select Properties



Space before /profile

At the end of Target string add:
`/profile:<profile name>`
NOTE: There should be a **space** before /profile & if profile name contains spaces in its name put quotes " " around it. For example if the profile was name My Profile, then
`/profile:"My Profile"`

Click OK



After the steps, right click on shortcut select RENAME and name the short cut reflective of the profile it starts

