

HOW TO SCHEDULE AN EG JOB WHEN LOGGED OFF AND USING REMOTE SERVERS

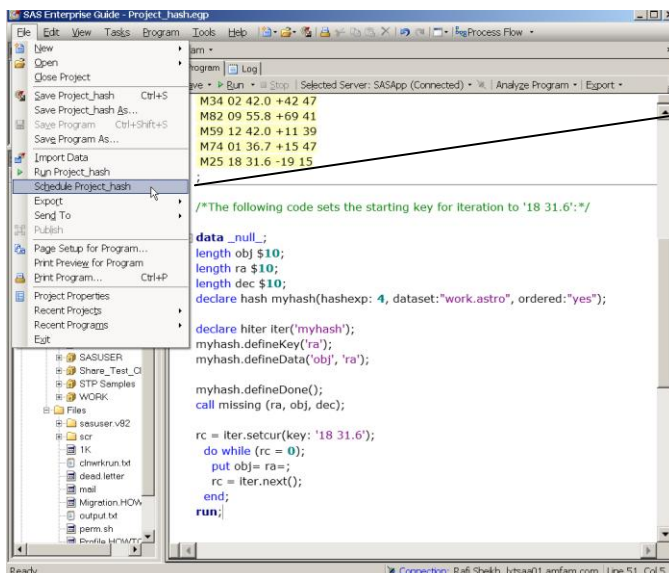
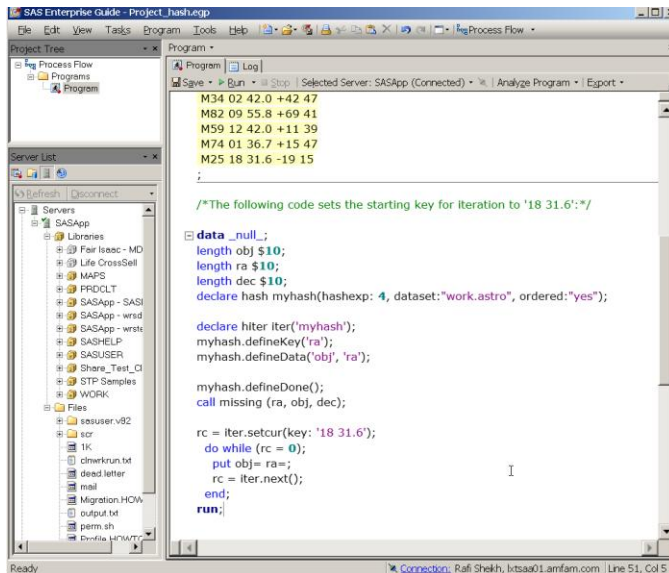
This article discusses scheduling an EG project/job especially when:

1. Access remote SAS server to process job, and
2. When not necessarily logged on to your desktop

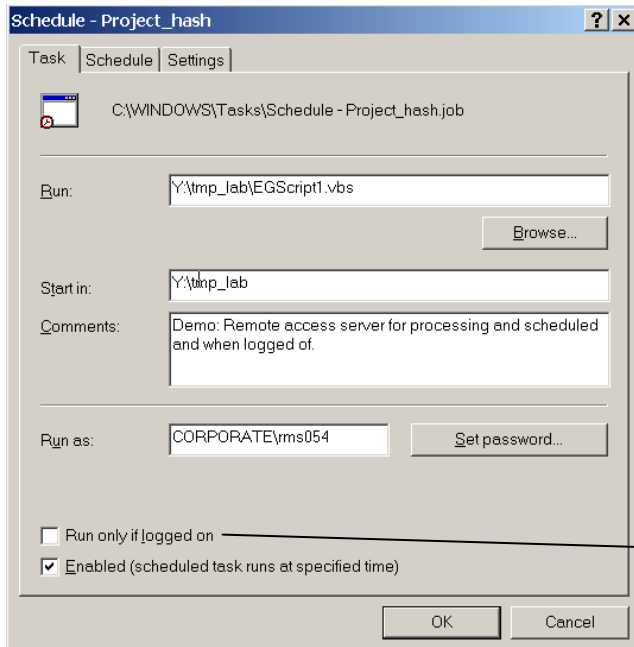
Note: Henceforth, Process Flow/Project/Code to be scheduled will be referred to as a Job.

Scheduling Process Flows/Projects:

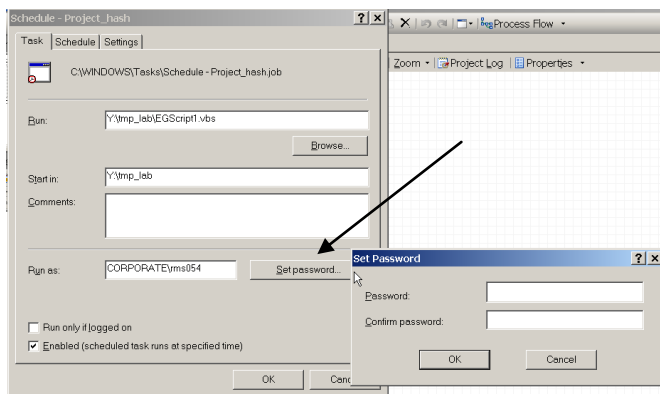
Using a sample code stored in /sasstore/tmp_lab/project_hash.egp



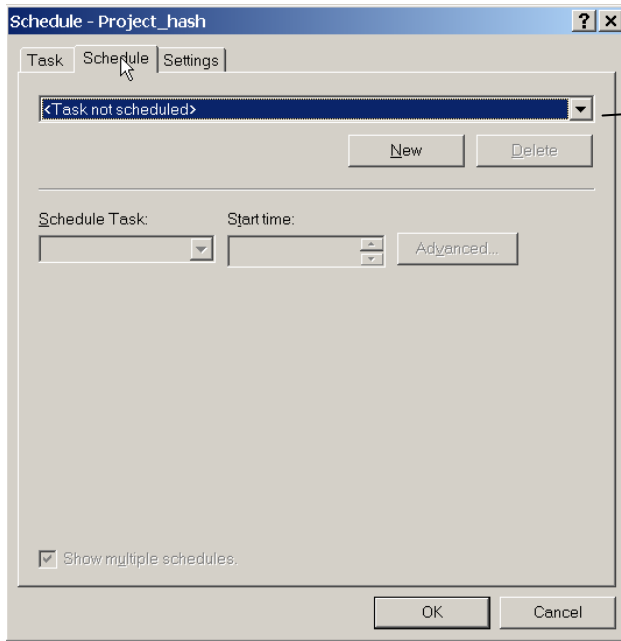
File > Schedule Project_hash



Leave unchecked
Click on tab Schedule

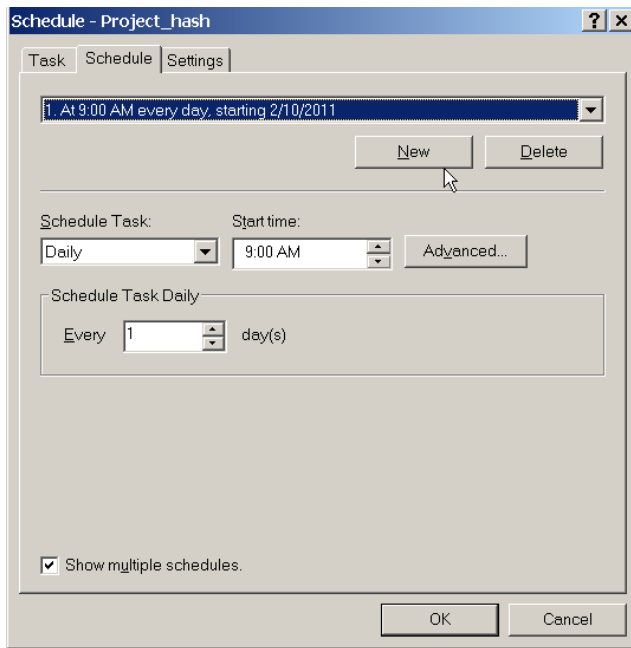


Click on set password
command button and enter
your password for the
server



Default if no previous scheduling exists

Click on New



Default value shows, change the settings by using the Schedule Task drop down menu Start Time and Schedule Task Daily menu or by Selecting Advanced command button

Some scheduling options shown:

Schedule - Project_hash

Task Schedule Settings

1. At 9:00 AM every day, starting 2/10/2011

New Delete

Schedule Task: Start time: 9:00 AM Advanced...

Daily

- Daily
- Weekly
- Monthly
- Once
- At System Startup
- At Logon
- When idle

day(s)

Show multiple schedules.

OK Cancel

Schedule - Project_hash

Task Schedule Settings

1. At 10:00 AM every day, starting 2/10/2011

New Delete

Schedule Task: Start time: 10:00 AM Advanced...

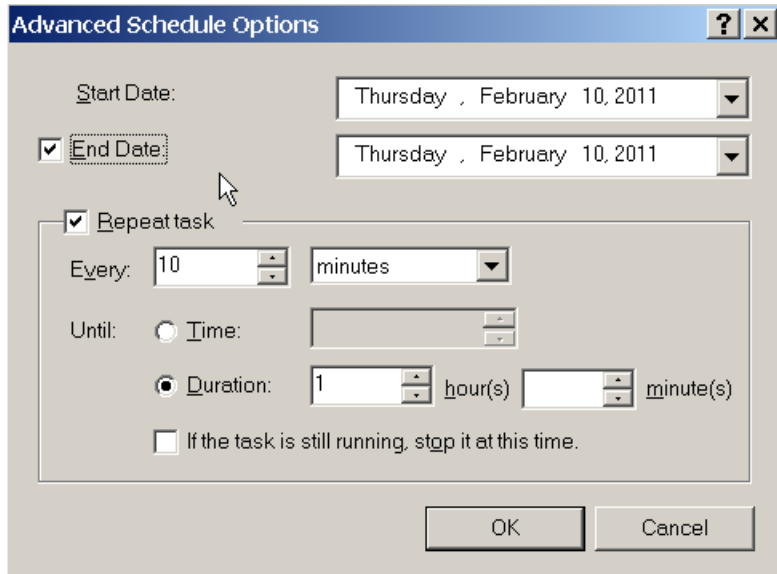
Schedule Task Daily

Every 1 day(s)

Show multiple schedules.

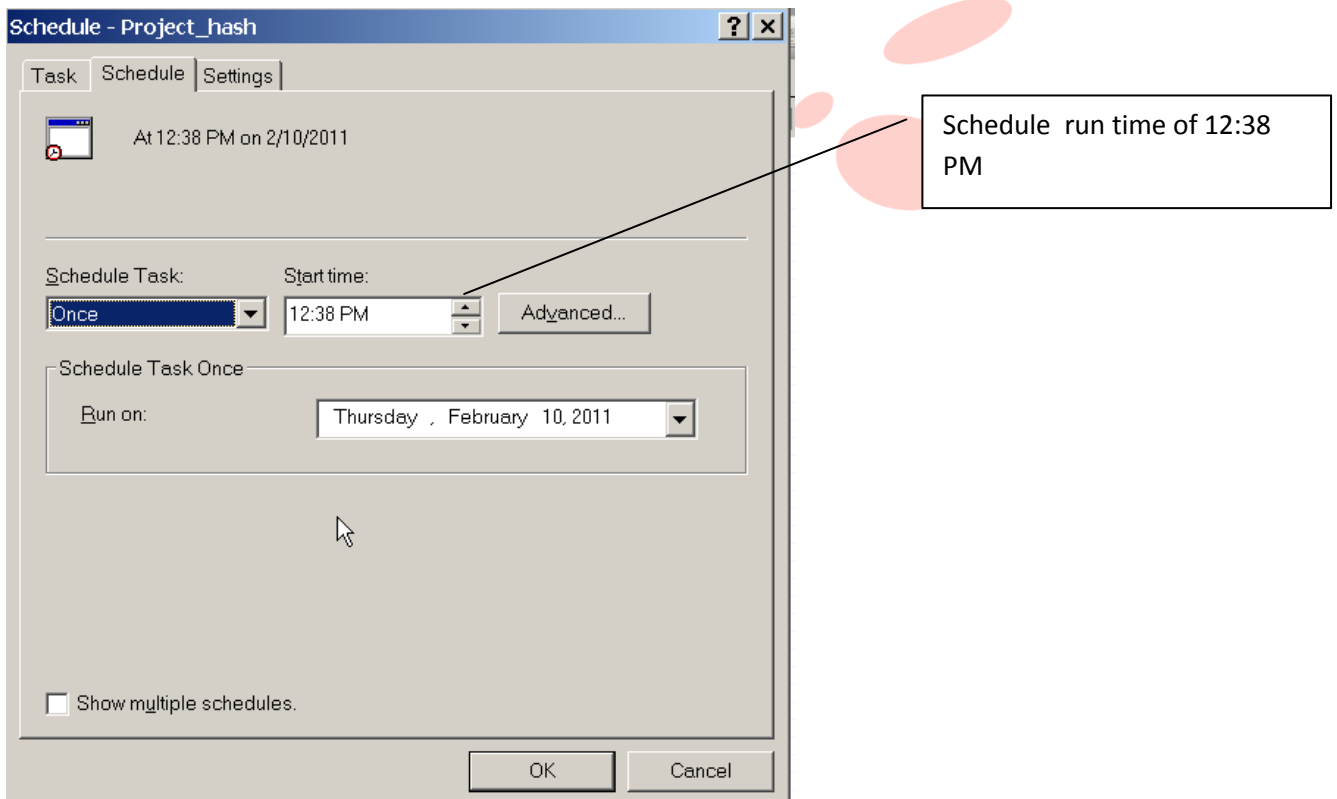
OK Cancel



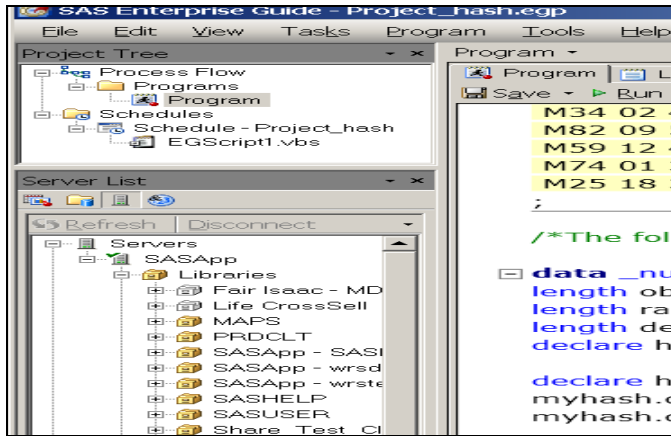


It is assumed that you know how to schedule a selective time for running the job

For demonstration purpose we have chosen:



Schedule run time of 12:38 PM



The job ran on scheduled time while I was Logged Off from my desktop:

```
-rw-r--r-- 1 rms054 corp 16384 Feb 10 12:38 hash.sas7bdat
```

analytiksTM
International Inc
Unleash performance

