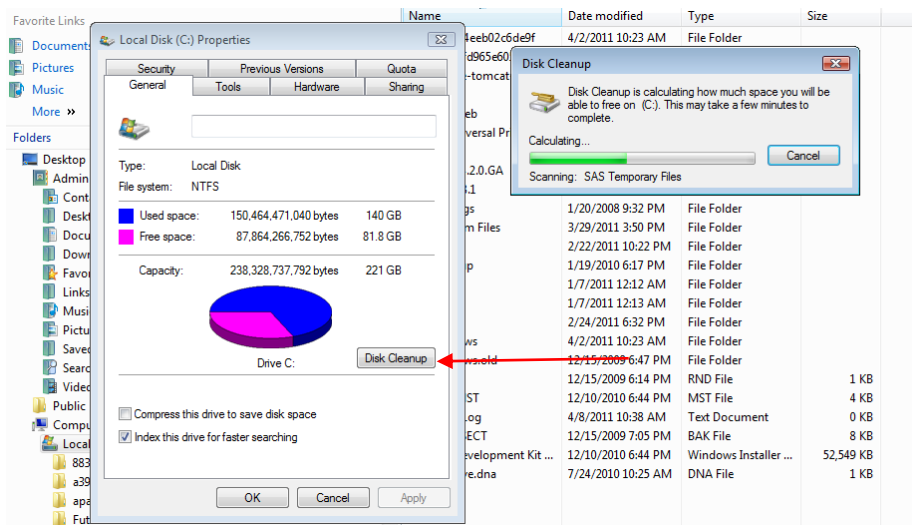
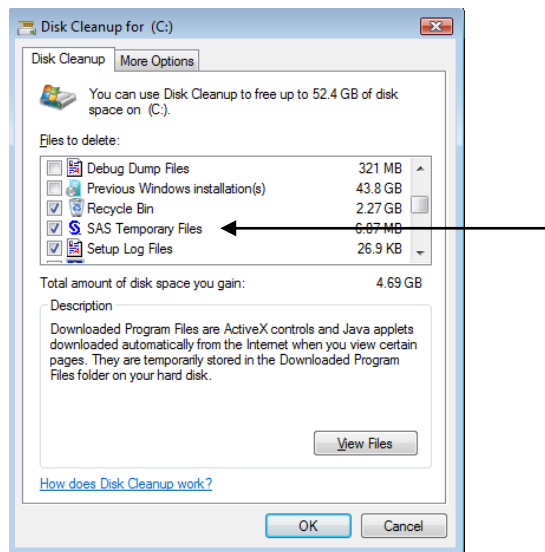


Maintain WORK Directories

1. The temp space if couple of options are defined in the *.cfg file –workinit & -workterm will clean up any non active previous session for a user (who is starting a new session) to clean.
2. Go to the C:\ drive or the drive that has the SAS install and right click > properties > Disk Cleanup (see below)



Select SAS Temporary Files



You can also read more information at: <http://support.sas.com/kb/8/786.html>