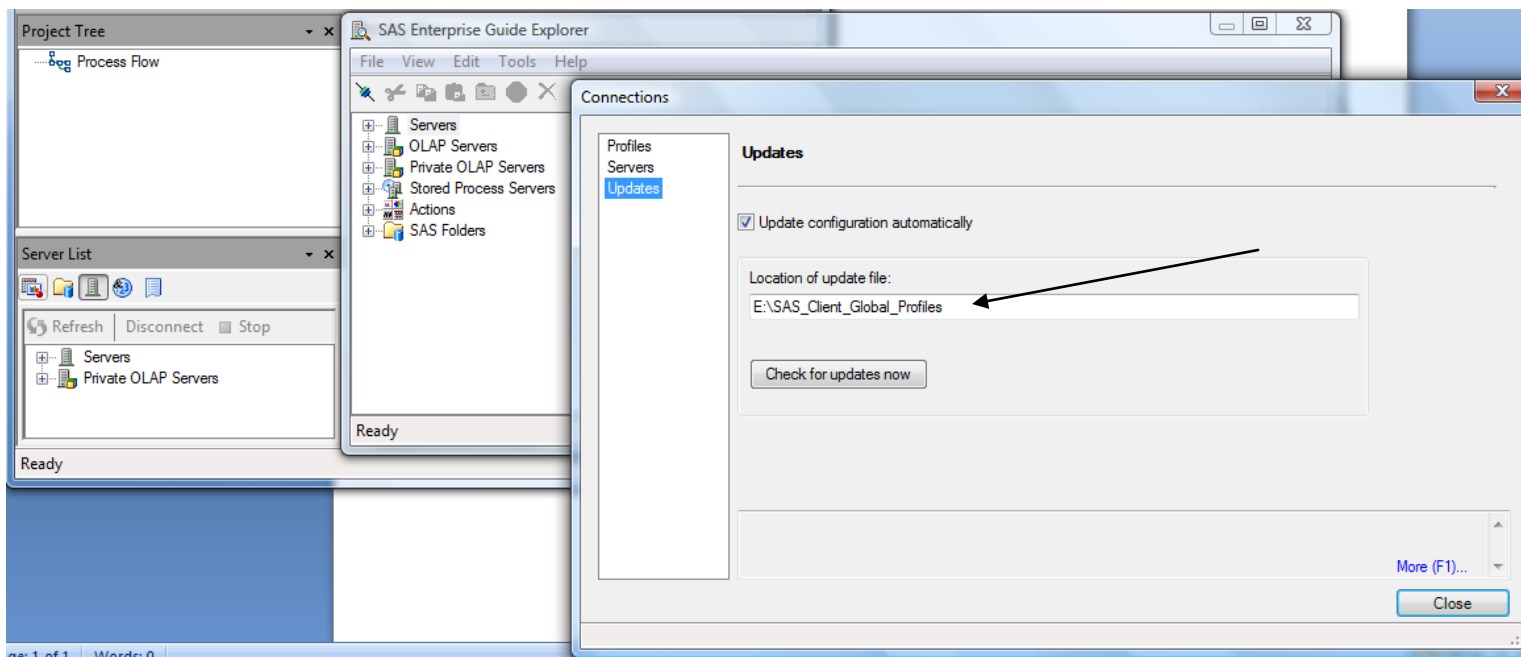


When configuring the shared SAS EG (and AMO) profile setup, two XML files are generated during the process.

1. SDSUpdate.xml
2. SDSControl.xml

Make sure that you do NOT put the SDSUpdate.xml file name in the location path. Ensure that the paths use, in case of WIN, UNC paths.

See below.



Read more articles at: <http://bit.ly/QGkZUA>