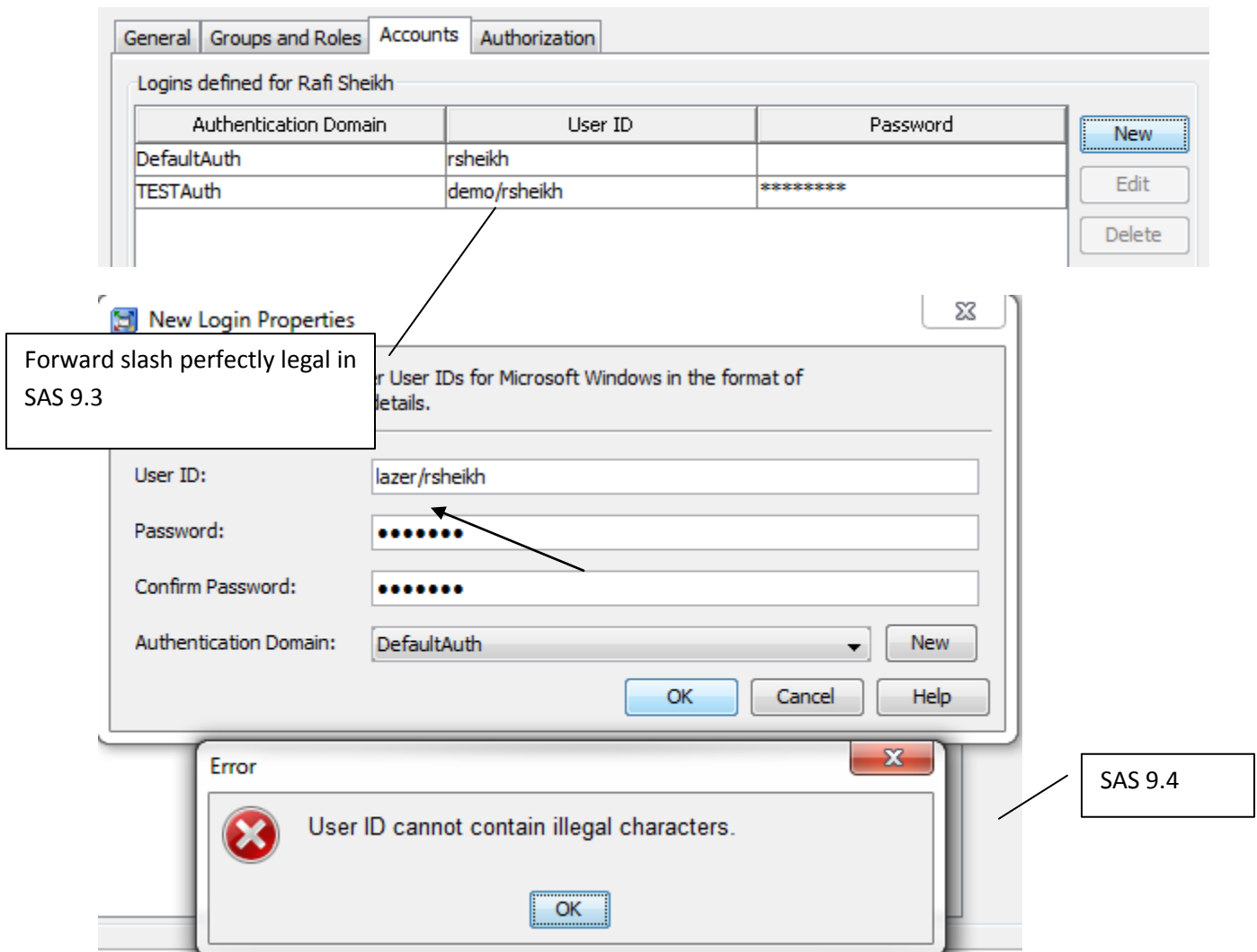


SAS 9.4 Illegal Character Change

By default SAS 9.3 M2 allowed use of different characters such as forward (/) and backward (\) slashes when adding login for example. However the forward slash is no longer allowed. One of the reason was to modify the import behavior and SAS chose to restrict the legality of these characters and a fall out was the restriction placed on forward slash.



A fix is planned for this issue.

Workaround

In cases where you have to establish a login to access certain libraries or databases; IBM's Lotus Notes constructs its credentials in this manner <domain>/<ID>. This is exactly what we ran into for a client accessing Lotus Notes and their set of credential had a forward slash. This forward slash is not a legal character as shown above in SAS 9.3 however without the login Database libraries could not be established.

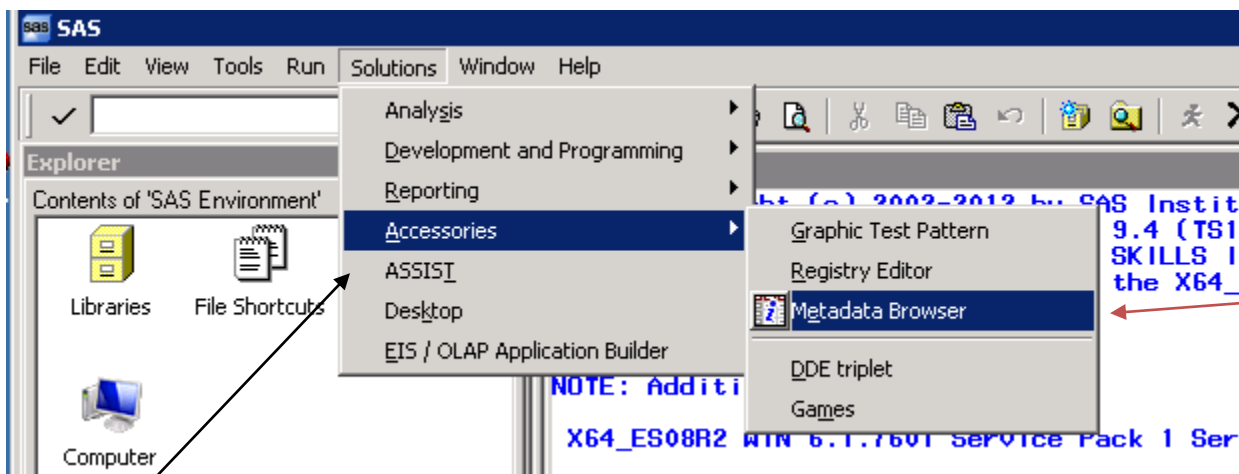
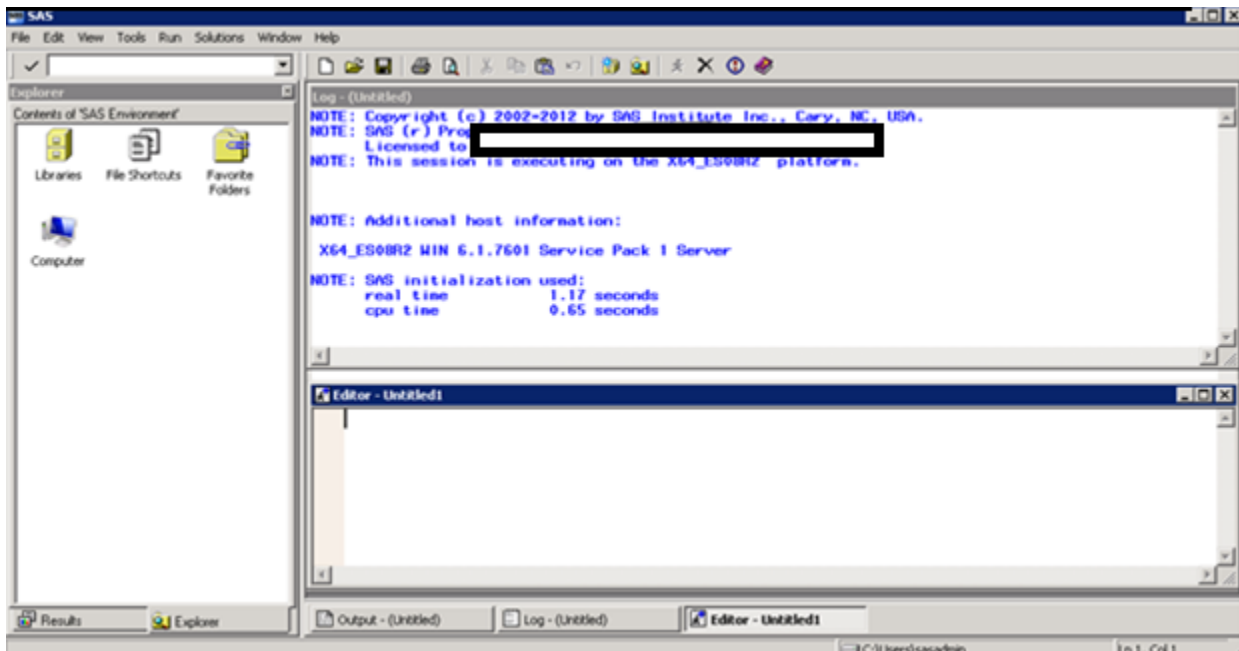
We did a workaround by using SAS foundation Editor and Metabrowse feature to change the \ slash (established in login) to /

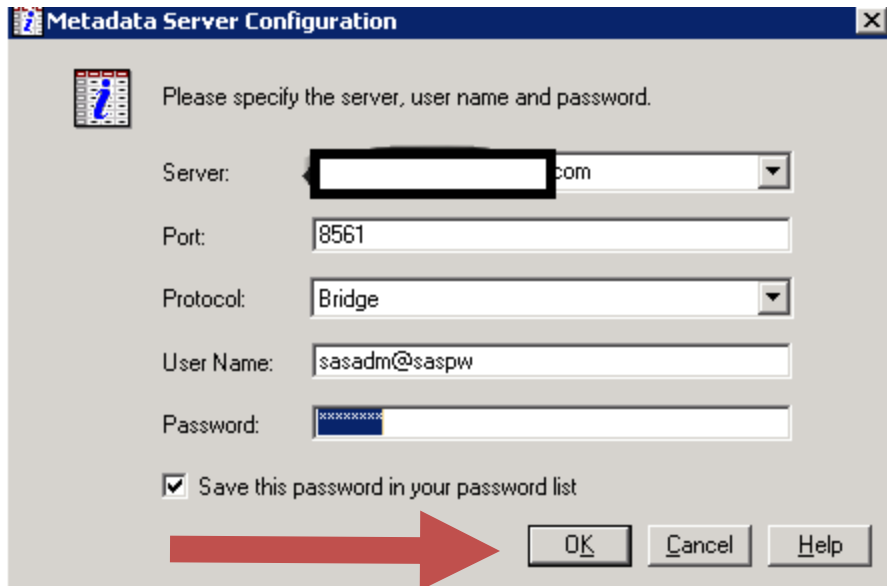
Context

- Lotus Notes was the target DB for registering libraries
- Lotus Notes (system DSN) credentials is in format DOMAIN/ID
- In this incident we opted to use functional set of credentials (UID/PWD) for a group of end users who wanted to access the Lotus Notes DB libraries. We created a group called LotusNotesUsers and added a login. However, since SAS 9.4 would not accept a / we created the login account as domain\id (following Lotus Notes format but with \ slash; for now)

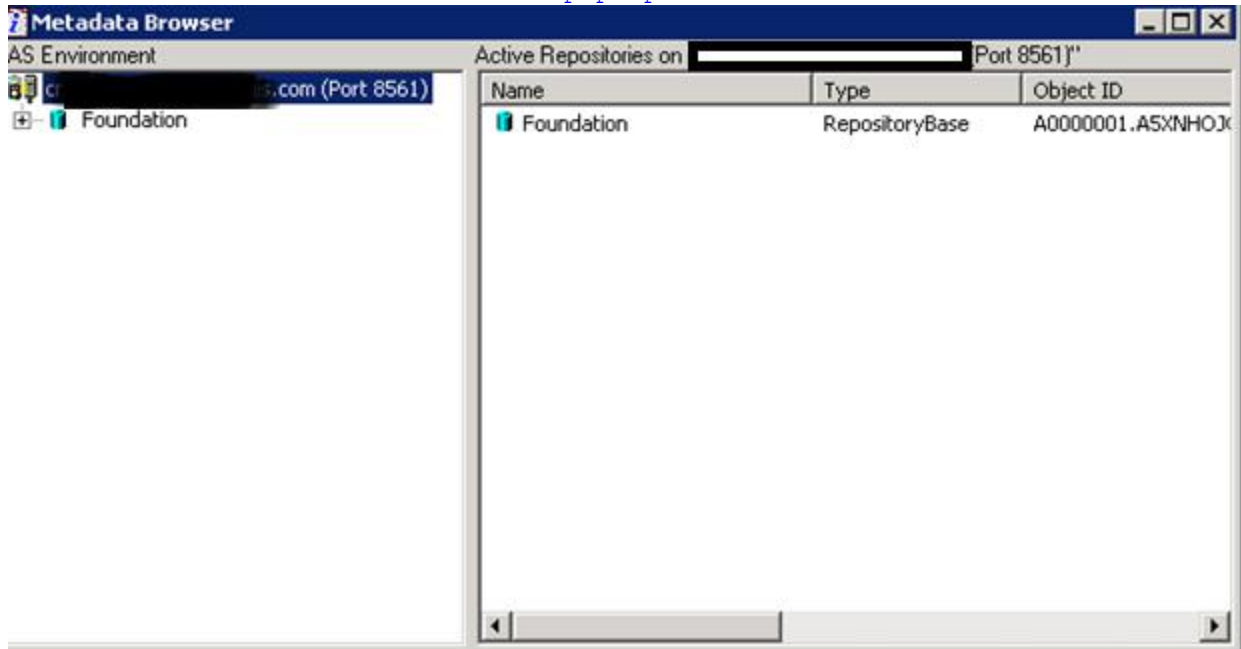
The steps we followed:

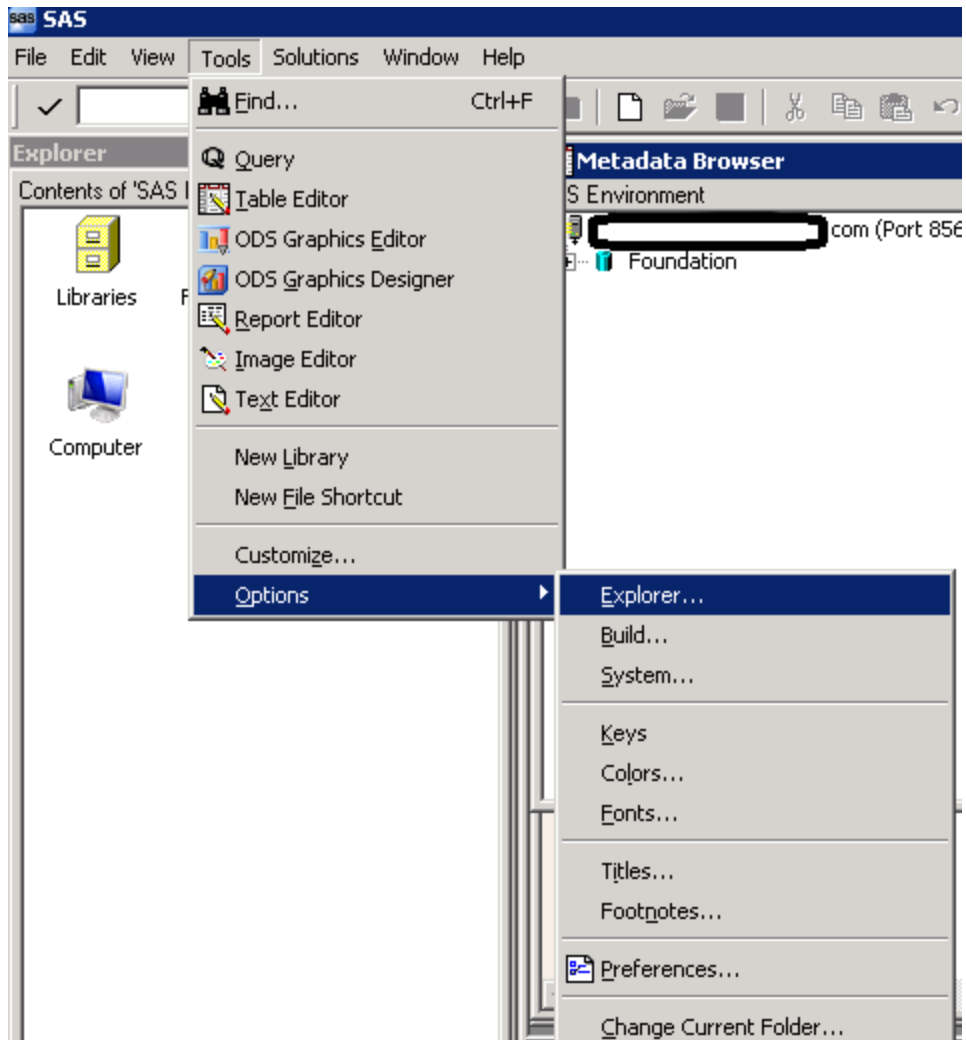
Start SAS 9.4 after logging in to server as SAS admin (external ID)

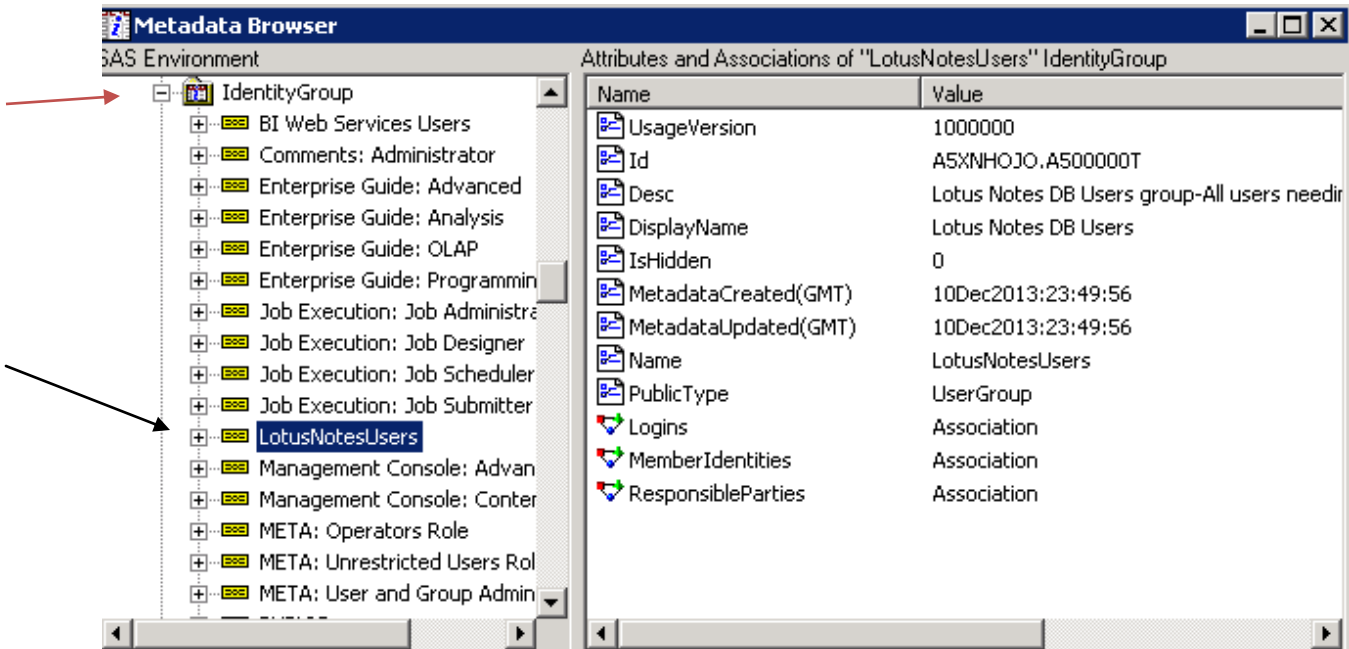
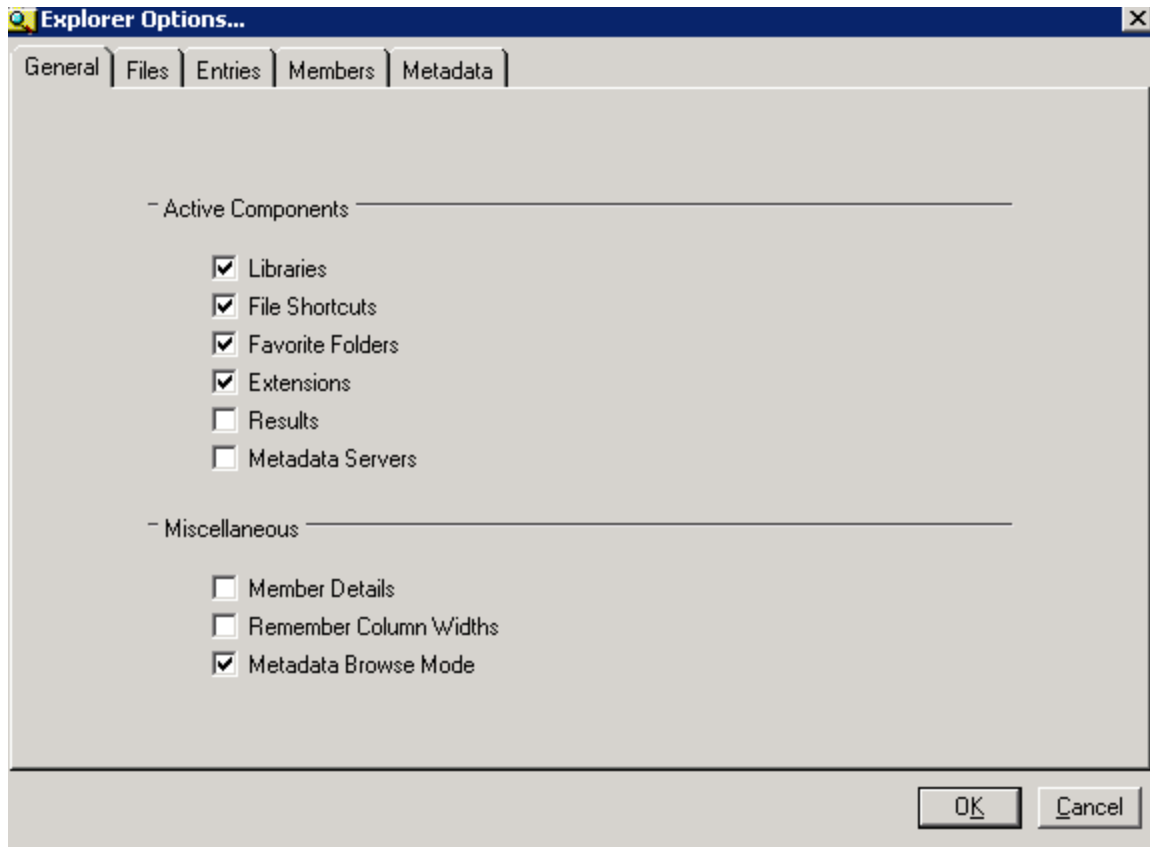




This window will become active and pop up







Metadata Browser

SAS Environment

Attributes and Associations of "Login.LotusNotesUsers.58" Login

Name	Value
UserID	SAS Admin/ [REDACTED]
Id	ASXNHOJO.AS000008
ChangeState	SAS ADMIN/ [REDACTED]
IsHidden	0
MetadataCreated(GMT)	16Dec2013:23:41:54
MetadataUpdated(GMT)	08Jan2014:21:28:14
Name	Login.LotusNotesUsers.58
Password	*****
PublicType	Login
UsageVersion	1000000
AssociatedIdentity	Association
Domain	Association

Expand and navigate to this group ID

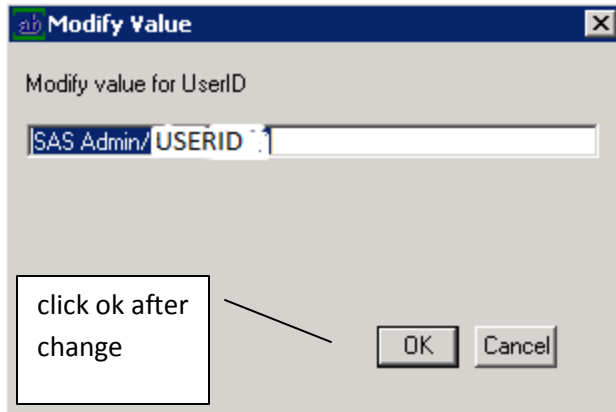
Metadata Browser

SAS Environment

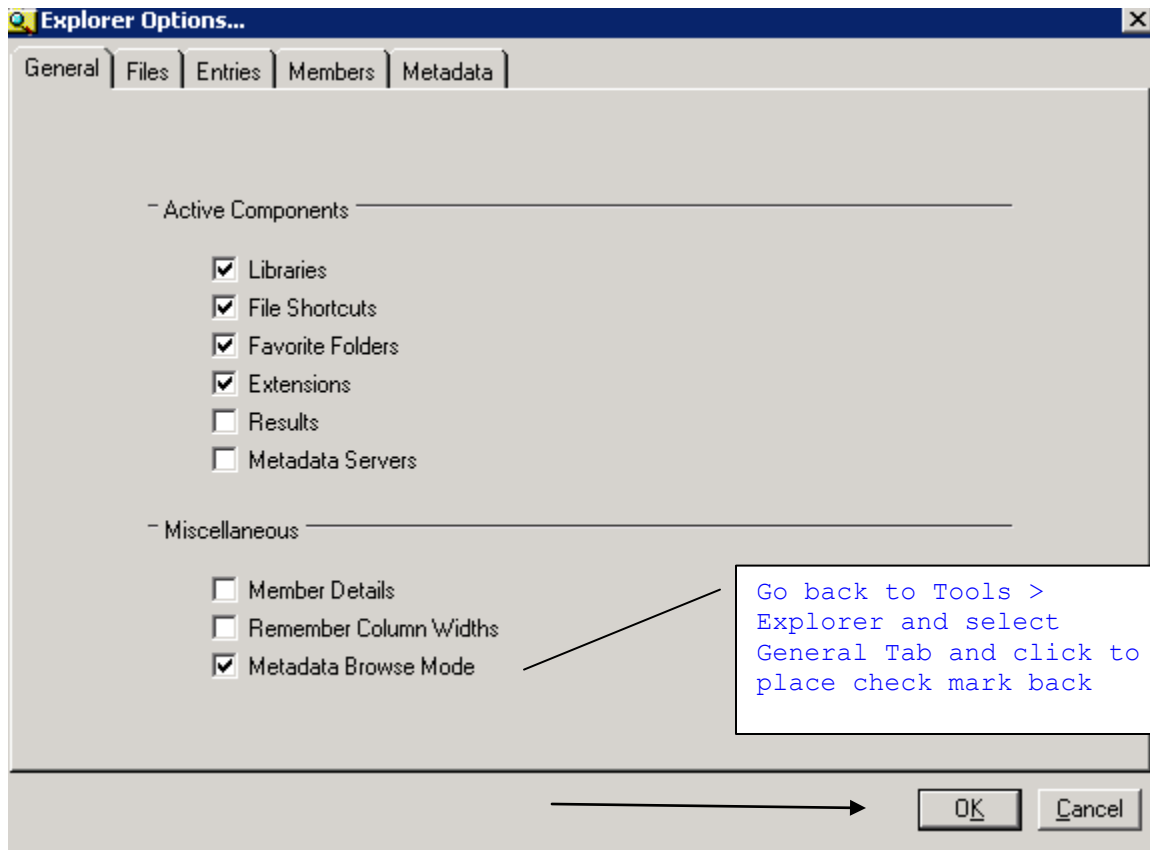
Attributes and Associations of "Login.LotusNotesUsers.58" Login

Name	Value
UserID	[REDACTED]
Id	AS000008
Change	[REDACTED]
IsHidde	[REDACTED]
Metada	23:41:54
Metada	21:28:14
Name	LotusUsers.58
Passw	
PublicT	
UsageV	
Associ	
Domain	

Select UserID right click then Modify



Click OK



Note:

Post workaround to have SAS accept the forward slash, we used PROC METALIB which then we created batch jobs and got us the registered libraries.

End.