

Did you Know Series

1. Java Error on WIN 10

If you have MS Windows 10 and you launch a SAS session, you may have experienced this error "**Failed to attach to Java during SAS startup**". More detailed version of the error:

```
ERROR: Failed to attach to Java during SAS startup.  
ERROR: Unable to load the java virtual machine.  
ERROR: Proc javainfo did not run correctly.
```

```
ERROR: The ODS initializer failed to instantiate during SAS startup.  
ERROR: Exception text: Assistive Technology not found:  
com.sun.java.accessibility.AccessBridge
```

Workaround:

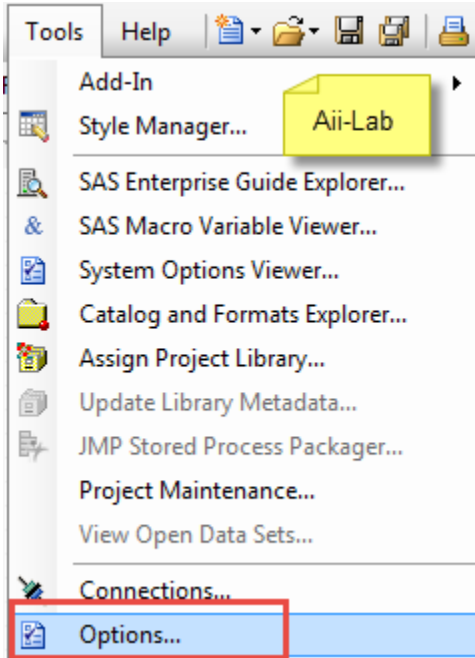
- Assuming your SAS install used default path, from Windows Explorer, open the following Windows directory: **C:\Program Files\SASHome\SASVersionedJarRepository\eclipse**
 - In that directory, locate this file: `com.sas.app.launcher.cacheFile`
 - Rename the file to `com.sas.app.launcher.old`.

Restart the SAS application

2. How to Turn Off Integrated Syntax Help in SAS Enterprise Guide

To turn off the integrated Syntax Help in SAS EG do the following steps:

1. Select **Tools > Options > SAS Programs**.



2. Click Editor Options.

The screenshot shows the SAS Options dialog box with the 'SAS Programs' section selected in the left-hand navigation pane. A red box highlights the 'SAS Programs' option in the list, with a white circle containing the number '1' next to it. The main area of the dialog is titled 'SAS Programs' and contains several settings. A yellow sticky note labeled 'Aii-Lab' is in the top right corner. The 'General' section has two checked options: 'Close all open data before running code' and 'Initialize grid (if available) when connecting to a workspace'. A red box highlights the 'Editor Options...' button, with a white circle containing the number '2' next to it. The 'Additional SAS code' section has five unchecked options, each with an 'Edit...' button: 'Insert custom SAS code before submitted code', 'Insert custom SAS code after submitted code', 'Submit SAS code when server is connected', 'Insert SAS code before %STPBEGIN', and 'Insert SAS code after %STPEND'.

- General
- Project Views
- Project Recovery
- Results
 - Results General
 - Viewer
 - SAS Report
 - HTML
 - RTF
 - PDF
 - Excel
 - PowerPoint
 - Graph
 - Stored Process
- Data
 - Data General
 - Performance
- Query
- OLAP Data
- Tasks
 - Tasks General
 - Custom Code
 - Output Library
- SAS Programs**
- File Comparison
- Program History
- Security
- Administration
- Application Logging

SAS Programs

Aii-Lab

General

- Close all open data before running code
- Initialize grid (if available) when connecting to a workspace

Editor Options...

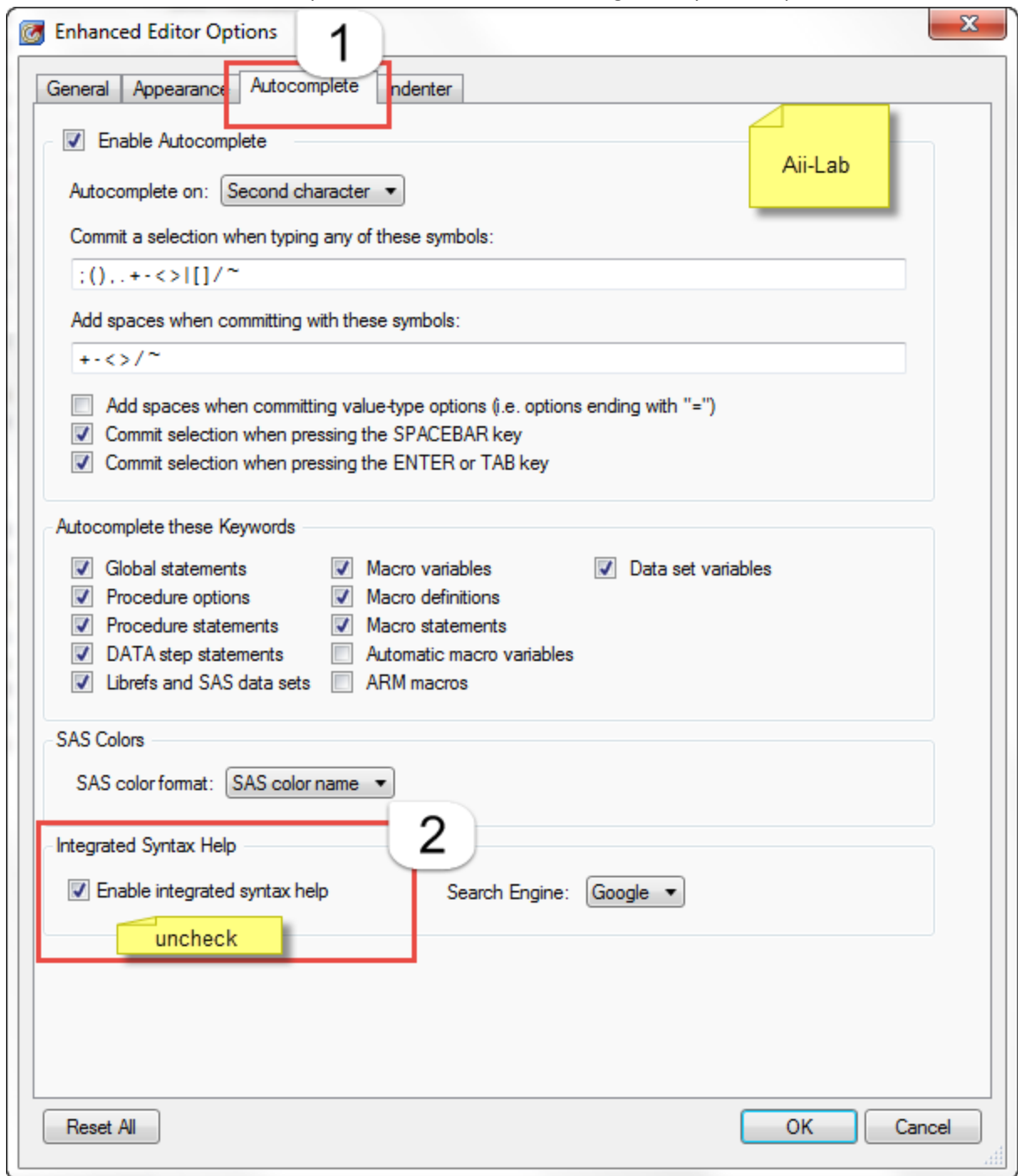
2

Additional SAS code

- Insert custom SAS code before submitted code Edit...
- Insert custom SAS code after submitted code Edit...
- Submit SAS code when server is connected Edit...
- Insert SAS code before %STPBEGIN Edit...
- Insert SAS code after %STPEND Edit...

1

3. At the bottom of the Autocomplete tab, deselect Enable integrated syntax help



4. Click OK to save your changes.

3. Resolve Graphic (Non) Output Issues:

If you used ACTIVEX or ACTXIMG device driver to create graphics output via SAS stored process an error like the following may be written to the log without the graphic output

Error: Physical file does not exist, C:\users\sassrv\AppData\Local\Temp\SAS Temporary Files_filename.bmp

Also, when using SAS BASE to produce a graphic output or when running a SAS OQ tests you may see the following error:

The program can't start because mfc100.dll is missing from your computer. Try reinstalling the program to fix this problem

Workaround:

Add as the first line in your code

```
goptions device=png;
```